

CHIFFRES CLÉS

L'IAE en 2020

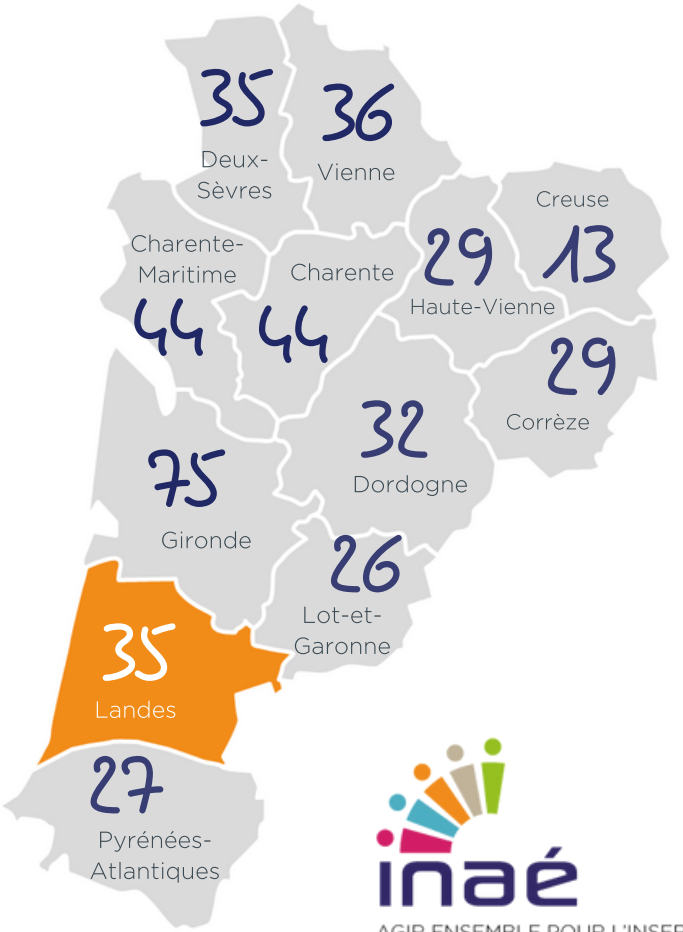
Insertion par l'Activité Economique

LANDES

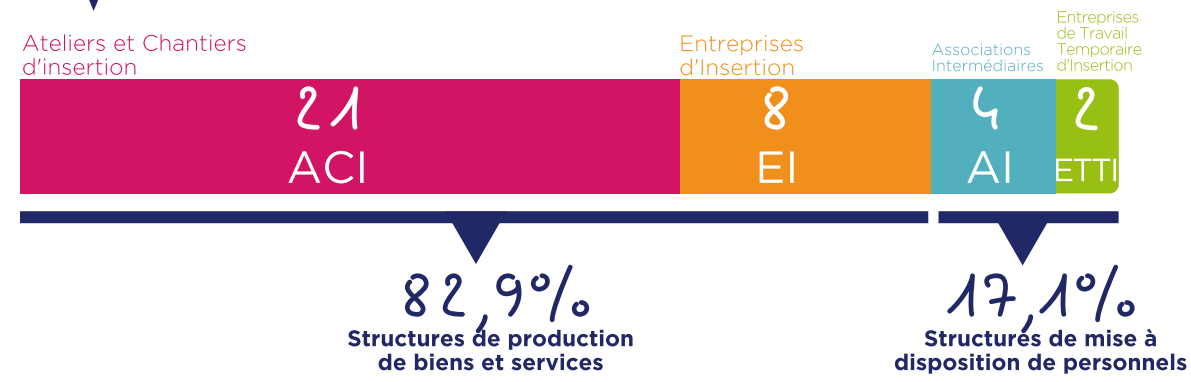
40

35 SIAE

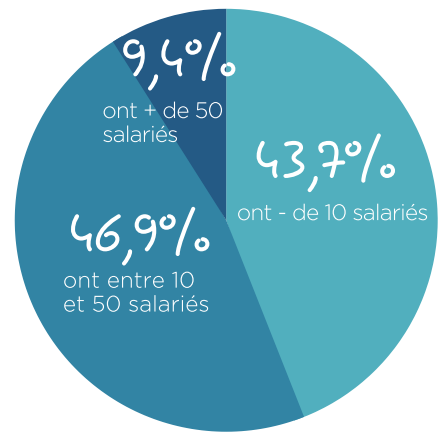
1355 Salariés en parcours



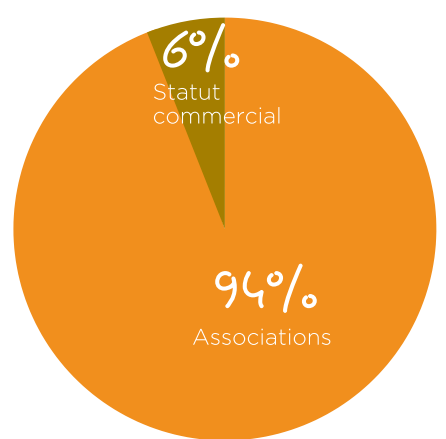
PORTRAIT DES SIAE



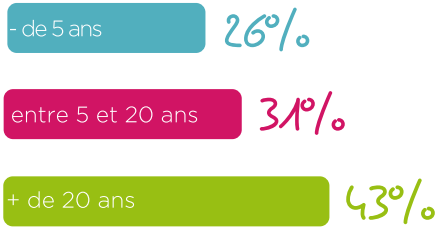
RÉPARTITION PAR TAILLE (ETP)



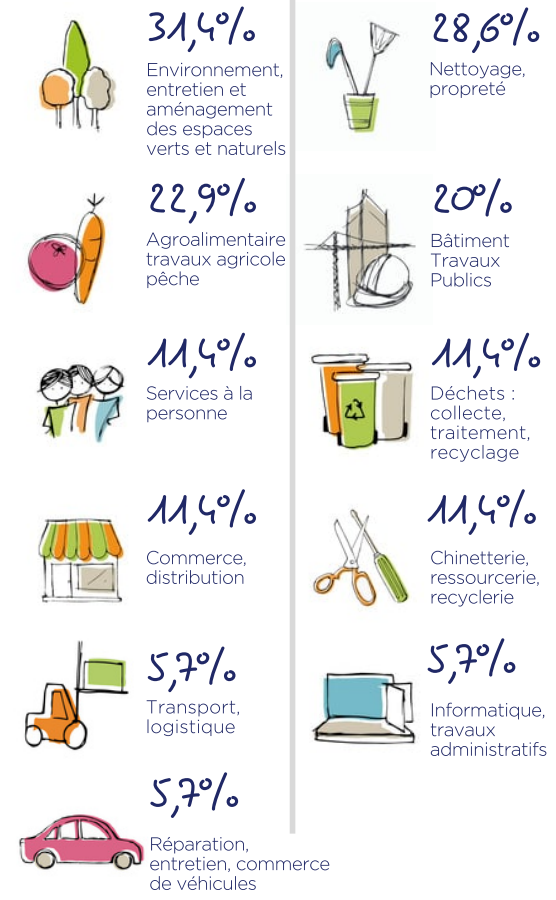
STATUT JURIDIQUE



ANCIENNETÉ



SECTEURS D'ACTIVITÉ

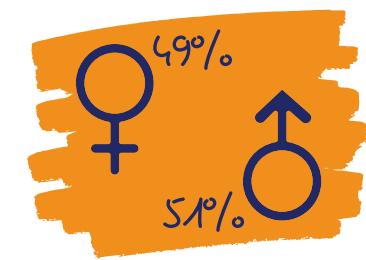
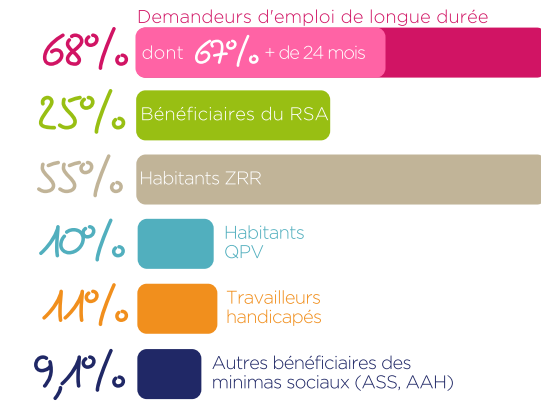


IMPACT SOCIAL

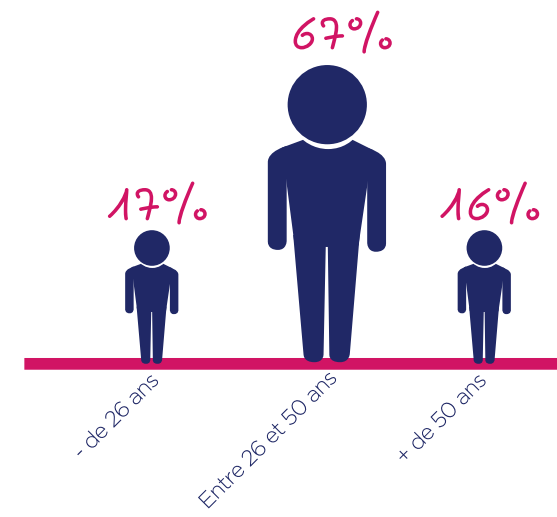
PROFIL DES SALARIÉS

1355 Salariés en parcours

soit 325 ETP



76% des salariés ont un niveau inférieur au Bac



TREMLIN VERS L'EMPLOI

